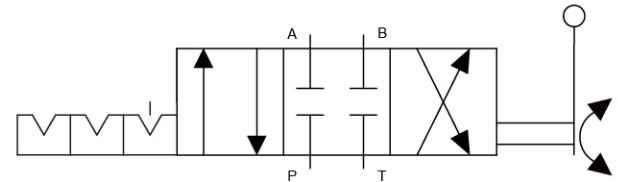
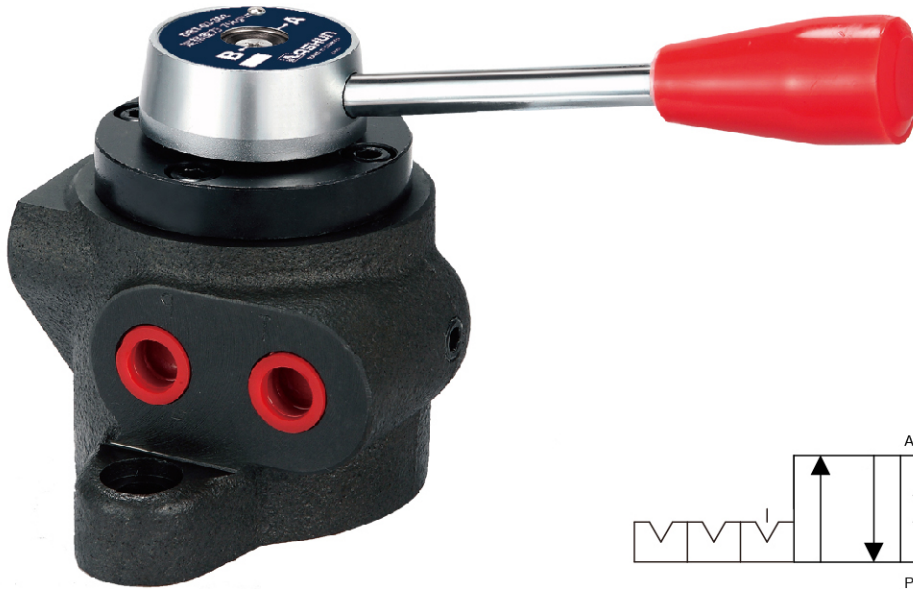


轉閥型換向閥 Rotary Type Directional Valves



DRT-03-3D2

珠子式 NO-SPRING DETENTED

選購指南 HOW TO ORDER

| DRT | - | 03 | - | 3D2 | - | 10 |
|-----------------------|---|-------------------|---|---|---|------------------------------------|
| 系列編號 SERIES NUMBER | | 閥口徑 VALVE SIZE | | 閥芯 SPOOL | | 設計號 DESIGN NUMBER |
| DRT | | - 03 : 3/8" | | - 3 D 2 閥芯種類 Spool Type 閥芯彈簧佈置 Spool-Spring Arrangement D: 珠子式 No-Spring Detented 位置數 Position Number 3: 三位閥 3 Position | | - 10 (標準型) Standard Type |

規格說明 SPECIFICATIONS

| 型式 Model Series | 最高使用壓力 Max. Operated Pressure MPa (kgf/cm ²) | 容許背壓 Back Pressure Allowable MPa (kgf/cm ²) | 最大流量 Max. Flow (L/min) | 重量 Weight (kg) |
|--------------------|---|--|---------------------------|-------------------|
| DRT-03-3D2 | 7 (70) | 2 (20) | 50 | 3.4 |

轉閥型換向閥 Rotary Type Directional Valves

● DRT-03-3D2

2-Ø11孔
沉孔Ø17.5深3.5
(17.5 Dia. 3.5 Deep)

