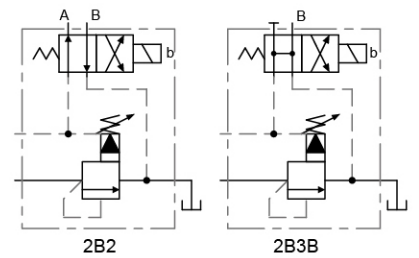


電磁控制溢流閥 Solenoid Controlled Relief Valves



■ 選購指南 HOW TO ORDER

SRV	- 03	G	- B	- 10
系列編號 SERIES NUMBER	閥口徑 VALVE SIZE	安裝型式 TYPE OF CONNECTION	壓力調整範圍 PRESSURE ADJ. RANGE MPa (kgf/cm ²)	設計號 DESIGN NUMBER
SRV	- 03 : 3/8"	G : 座墊型 Sub-plated Type	- B : 0.7 (7) - 7 (70) - C : 1.4 (14) - 14 (140) - H : 3.5 (35) - 21 (210)	- 10 (標準型) Standard Type
	- 04 : 1/2"	T : 配管型 Thread Type		
	- 06 : 3/4"	G : 座墊型 Sub-plated Type		
	- 10 : 1-1/4"	T : 配管型 Thread Type		

■ 規格說明 SPECIFICATIONS

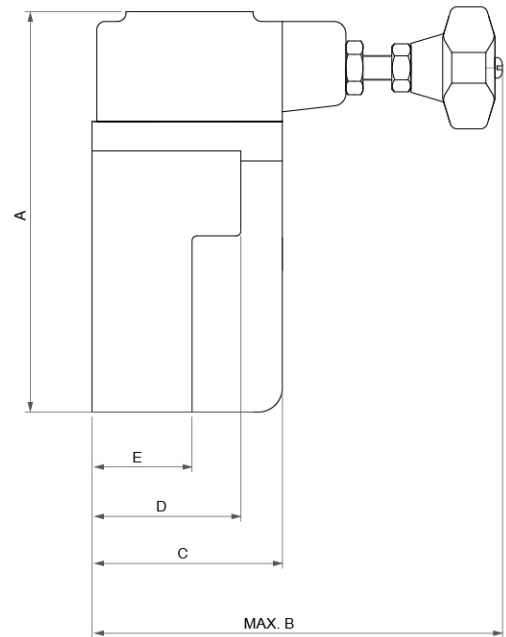
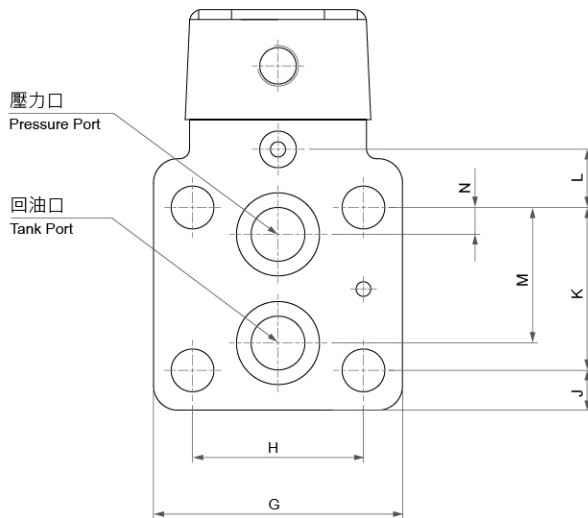
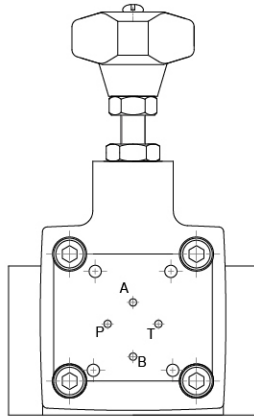
型式 Model Series	最高使用壓力 Max. Operated Pressure MPa (kgf/cm ²)	最大流量 Max. Flow (L/min)	重量 Weight (kg)	
SRV-03G	21 (210)	100	5.5	
SRV-04T		100	4.3	
SRV-06(G/T)		200	6.8	4.7
SRV-10(G/T)		400	11	7

■ 安裝螺絲 MOUNTING BOLTS

型式 Model Series	安裝螺絲 Mounting Cap Screw
SRV-03G	M 12 X 70 L 2pcs / M 12 X 90 L 2pcs
SRV-06G	M 16 X 55 L 2pcs / M 16 X 75 L 2pcs
SRV-10G	M 20 X 70 L 2pcs / M 20 X 90 L 2pcs

電磁控制溢流閥 Solenoid Controlled Relief Valves

● SRV-(03/06/10)G

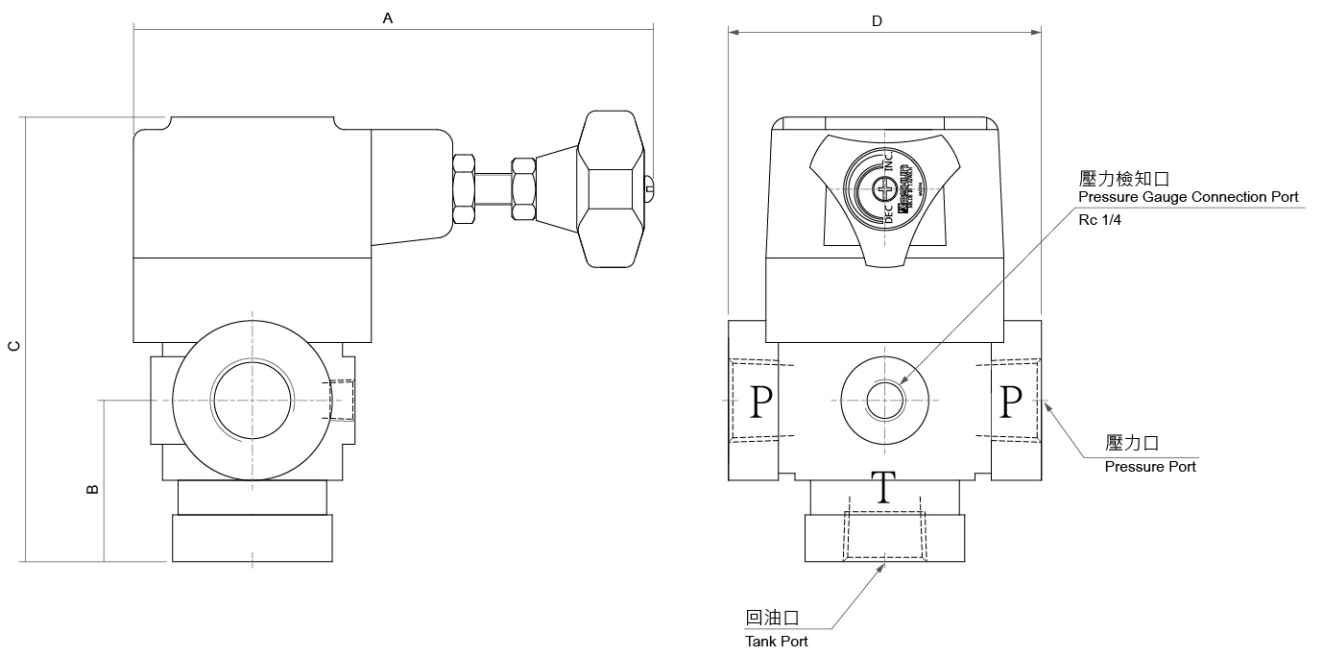


■ 尺寸說明 DIMENSION

型式 Model Series	A	B	C	D	E	G	H	J	K	L	M	N
SRV-03G	228.5	175	78	78	57	82	53.8	21.5	53.8	0	47.5	22
SRV-06G	254	175	78	60	40	104	70	19	66.7	23.8	55.5	11
SRV-10G	281	184	87.5	67	47	125	52.6	18.5	88.9	31.8	76.2	12.7

電磁控制溢流閥 Solenoid Controlled Relief Valves

● SRV-(04/06/10)T



■ 尺寸說明 DIMENSION

型式 Model Series	A	B	C	D
SRV-04T	MAX. 165	51	142	103
SRV-06T	MAX. 165	51	142	103
SRV-10T	MAX. 151	68	175	130